



PRECISION

ERECTING • RIGGING • CONSULTING

e-News

Precision Erection Company

Named One of the
Top Metal Builders in 2014

The May 2015 Metal Construction News edition feature article, “Top Metal Builders in 2014”, ranked Precision Erection Company 4th out of the top 100 metal builders with 1,169,397 square feet erected in 2014.



The article states that “The growth and development of the metal building systems industry has ramped up over the last few years as the economy has grown. But even with a growth economy, the industry participants are facing tough and challenging obstacles. For the Top Metal

Builders of 2014, those challenges generally boiled down to two things: Shortage of qualified labor and difficult weather conditions. The companies listed here met those challenges and achieved industry –wide success.”

According to Precision Division Manager, Dale Meece and Business Development / Senior Estimator Wayne Hopper, Precision credits their top ranking to, “having the best qualified group of people in this industry working for our company. This ranges from our sales and estimating department being awarded projects, to our field associates and the last bolt turned on each project.”



Top Metal Builders Rank By Square Footage

Rank	Company Name/Location	Year Founded	2014 Footage	2013 Footage	% Change Footage	2014 Tonnage	Affiliated Manufacturer
1	Span Construction & Engineering Inc., Madera, Calif.	1979	5,930,735	6,174,060	-4.1%	18,495.0	Varco Pruden Buildings, Butler Manufacturing
2	Keller Inc., Kaukauna, Wis.	1960	1,521,736	1,069,785	29.7%	9,157.0	American Buildings Co.
3	Harrell Construction Co. Inc., Jacksonville, Fla.	1977	1,267,900	N/A	N/A	4,109.0	Varco Pruden Buildings
4	Precision Erection Co., Russell Springs, Ky.	1991	1,169,397	N/A	N/A	4,327.0	Various
5	Crossland Construction Co. Inc., Columbus, Kan.	1978	1,144,613	N/A	N/A	4,489.4	



PRECISION

ERECTING • RIGGING • CONSULTING

e-News



Safety Report

Precision Erection Company celebrated our safety record on May 22, 2015 with an associate cookout. Our current Safety Record is just north of 2,000 days and 624,000 man hours without a lost time accident. Safety is No Accident.



A valued, long-term client, presented Precision Erection Company with their *2014 Corporate Safety Award*. This award is in recognition of Precision's outstanding safety practices exemplified on the following projects; Metalsa Expansion in Elizabethtown, KY and Shop HQ Expansion in Bowling Green, KY.





PRECISION

ERECTING • RIGGING • CONSULTING

e-News

Current Projects

Over one million square feet under contract.

- ◆ **Johnan American**
Bardstown, KY

- ◆ **Bridgestone**
Dickson, TN

- ◆ **Marsh**
Hopkinsville, KY

- ◆ **UK Dinning Hall**
Lexington, KY

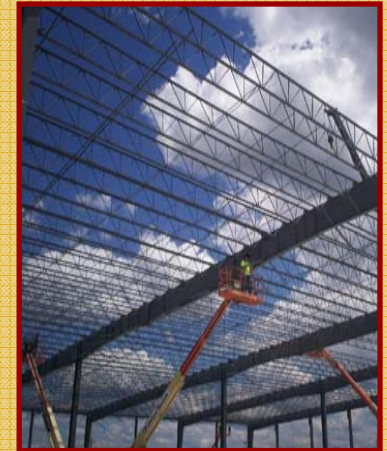


- ◆ **Cabela's**
Lexington, KY

- ◆ **Mitsuba**
Bardstown, KY

- ◆ **Otic's**
Kodak, TN

- ◆ **Winston Plywood & Veneer**
Louisville, MS





PRECISION

ERECTING • RIGGING • CONSULTING

e-News

Featured Project

Winston Plywood and Veneer



Precision is currently erecting a Pre-Engineer Building at the Winston Plywood & Veneer Facility in Louisville, Mississippi. The Facility was destroyed in a tornado 1 year ago. The new 300,000 sqft plywood plant will double the size of the original plant and will be one of the top producers in the United States when construction is complete.

Precision Project Superintendent on site is Donnie Hale with a 30 man crew. The project is expected to be completed in November 2015.





PRECISION

ERECTING • RIGGING • CONSULTING

e-News

Precision Welcomes Our Newest Associate *Stephen Johnson!*



Mr. Stephen Johnson joins our accounting team as Precision Erection's new Accounting Controller with more than 25 years accounting experience.

Johnson is a graduate of the University of Kentucky with a Bachelor of Science in Accounting. He comes to us from the Accounting firm Evan, Harville, Atwell & Company, CPAs, PLLC in Somerset, Kentucky.

Stephen and his wife Alesa have been married for 25 years and have two beautiful children. Ashley, 19, is a freshman in college at Western Kentucky University and Brentley, 15, is a freshman in High School at Pulaski County. Stephen enjoys farming in his spare time and is an entrepreneur of items that can be created with a 3-D printer.

Welcome to the Team Stephen!



PRECISION

ERECTING • RIGGING • CONSULTING

e-News

Donnie Hale



The *2014 Building for Excellence Associate of the Year Award* was presented to Mr. Donnie Hale. Hale is the first associate to receive the Building for Excellence Associate of the Year for a second time. He accepted this award the first time in 2006.

The Precision Organization bestows this very serious and honorable recognition based upon an associate's overall performance. He was nominated by his co-associates using the following criteria for selection: Loyalty, Attitude, Effort, Ability and Quality of Work.

Donnie has been with Precision Erection Company since 1987 and has been an outstanding leader for the entire company for more than 27 years. Company President, Stephen Branscum said, "Donnie is a "10" in all respects, striving for excellence in everything he does both professionally and personally."

The five Honorable Mentions recognized were; Josh Branscum, Al Carbajal, Jack Glenn, Sandra Honaker and David Mann. These five individuals were also nominated by their peers for their excellence in the industry.

